

Newtown Board of Education

Enrollment Presentation

February 27, 2014

Total Elementary Enrollment/Staffing

	06-07	07-08	08-09	09-10	10-11	11-12	12-13	13-14	14-15
Enrollment	2093	2031	1983	1915	1840	1723	1605	1465	1393
+/-		-62	-48	-68	-75	-117	-118	-140	-72
Staffing	186.37	185.03	185.62	180.69	169.45	154.75	153.53	154.74	147.18
+/-		-1.34	+0.59	-4.93	-11.24	-14.70	-1.22	+1.21	-7.56

➤ In 2013-2014 three elementary positions were not filled based on actual enrollment being lower than projected enrollment.

Hawley Elementary School

Enrollment/Staffing

	06-07	07-08	08-09	09-10	10-11	11-12	12-13	13-14	14-15
Enrollment	431	418	403	420	416	384	361	349	345
+/-		-13	-15	+17	-4	-32	-23	-12	-4
Staffing	42.14	42.09	42.33	41.33	38.06	35.29	35.42	35.99	35.42
+/-		-0.05	+0.24	-1.00	-3.27	-2.77	+0.13	+0.57	-0.57

- In the past eight years 1.0 classroom teachers and 5.05 educational assistant positions have been reduced. Other staffing has remained relatively constant.
- Next year 1.0 classroom teachers will be reduced and a 0.49 educational assistant position will be added.
- Hawley's enrollment has declined by 82 students in the past eight years and is projected to decline another 4 in the coming year.

Middle Gate Elementary School Enrollment/Staffing

	06-07	07-08	08-09	09-10	10-11	11-12	12-13	13-14	14-15
Enrollment	516	531	516	495	480	476	451	418	384
+/-		+15	-15	-21	-15	-4	-25	-33	-34
Staffing	46.99	46.99	46.99	46.06	44.29	40.41	40.41	41.48	38.91
+/-		0	0	-0.93	-1.77	-3.88	0	+1.07	-2.57

- In the past eight years 0.35 classroom teachers and 5.16 educational assistant positions have been reduced. Other staffing has remained relatively constant.
- Next year 3.0 classroom teachers will be reduced and a 0.43 educational assistant position will be added.
- Middle Gate's enrollment has declined by 98 students in the past eight years and is projected to decline another 34 in the coming year.

Head O'Meadow Elementary School Enrollment/Staffing

	06-07	07-08	08-09	09-10	10-11	11-12	12-13	13-14	14-15
Enrollment	475	443	431	375	369	342	339	303	301
+/-		-32	-12	-56	-6	-27	-3	-36	-2
Staffing	43.64	42.35	42.35	40.35	36.42	33.25	34.02	33.59	32.17
+/-		-1.29	0	-2.00	-3.93	-3.17	+0.77	-0.43	-1.42

- In the past eight years 5.0 classroom teachers and 6.33 educational assistant positions have been reduced. Other staffing has remained relatively constant.
- Next year 2.0 classroom teachers will be reduced and a 0.44 educational assistant position will be added.
- Head O'Meadow's enrollment has declined by 172 students in the past eight years and is projected to decline another 2 in the coming year.

Sandy Hook Elementary School

Enrollment/Staffing

	06-07	07-08	08-09	09-10	10-11	11-12	12-13	13-14	14-15
Enrollment	671	639	633	625	575	521	454	395	363
+/-		-32	-6	-8	-50	-54	-67	-59	-32
Staffing	53.60	53.60	53.95	52.95	50.68	45.80	43.68	43.68	40.68
+/-		0	+0.35	-1.00	-2.27	-4.88	-2.12	-1.57	-3.0

➤ In the past eight years 6.00 classroom teachers and 3.46 educational assistant positions have been reduced. In 2012-2013 school year the Assistant Principal position was reduced to a Lead Teacher position. 1.25 FTE reading teachers were added also. Other staffing has remained relatively constant.

➤ Next year 2.0 classroom teachers, a .43 LM clerk and a .57 clerical/secretarial position will be reduced.

➤ Sandy Hook's enrollment declined by 276 students in the past eight years and is projected to decline another 32 students in the coming year.

Reed Intermediate School

Enrollment/Staffing

	06-07	07-08	08-09	09-10	10-11	11-12	12-13	13-14	14-15
Enrollment	911	886	902	861	895	878	819	788	715
+/-		-25	+16	-41	+34	-17	-59	-31	-73
Staffing	72.97	71.25	71.25	69.25	66.20	64.35	64.35	65.28	61.93
+/-		-1.72	0.00	-2.00	-3.05	-1.85	0.00	+0.93	-3.35

- In the past eight years 4.00 classroom teachers and 3.79 educational assistant positions have been reduced. 2.00 FTE reading teachers were added also. Other staffing has remained relatively constant.
- In the coming year an additional 4.00 classroom teachers, a 0.50 PE teacher and a .35 clerical/secretarial position will be reduced and a 0.05 educational assistant, a 0.80 reading teacher and 0.60 computer teacher will be added.
- Reed's enrollment declined by 123 students in the past eight years and it is projected to decline another 73 students in the coming year.

Newtown Middle School Enrollment/Staffing

	06-07	07-08	08-09	09-10	10-11	11-12	12-13	13-14	14-15
Enrollment	890	930	929	896	897	871	893	857	825
+/-		+40	-1	-33	+1	-26	+22	-36	-32
Staffing	74.21	75.80	76.04	75.47	74.50	74.48	74.48	74.48	70.48
+/-		+1.59	+0.24	-0.57	-0.97	-0.02	0.00	0.00	-4.00

- In the past eight years 1.00 classroom teachers (world language) has been reduced. Other staffing has remained relatively constant.
- In the coming year 4.0 classroom teachers will be reduced.
- Newtown Middle School's enrollment declined by 33 students in the past eight years and is projected to decline by an additional 32 students in the coming year.

Newtown High School Enrollment/Staffing

	06-07	07-08	08-09	09-10	10-11	11-12	12-13	13-14	14-15
Enrollment	1714	1719	1704	1731	1731	1744	1764	1716	1717
+/-		+5	-15	+27	0	+13	+20	-48	+1
Staffing	123.42	126.46	127.5	131.04	134.24	136.18	136.11	136.51	134.91
+/-		+3.04	+1.04	+3.54	+3.20	+1.94	-0.07	+0.40	-1.60

➤ In the past eight years 0.75 health teachers, 1 world language teacher, 0.85 family and consumer science teacher, 0.60 math teachers, 1.2 PE teachers, 4.8 science teachers, 2.26 history teachers, 1.20 tech ed teachers, and 2.00 flex/tap teachers were added. A 0.60 art teacher, 1.20 business ed teacher, were reduced.

➤ In the coming year 1.0 are teacher, 0.2 math teacher, history teacher and classroom teacher will be reduced

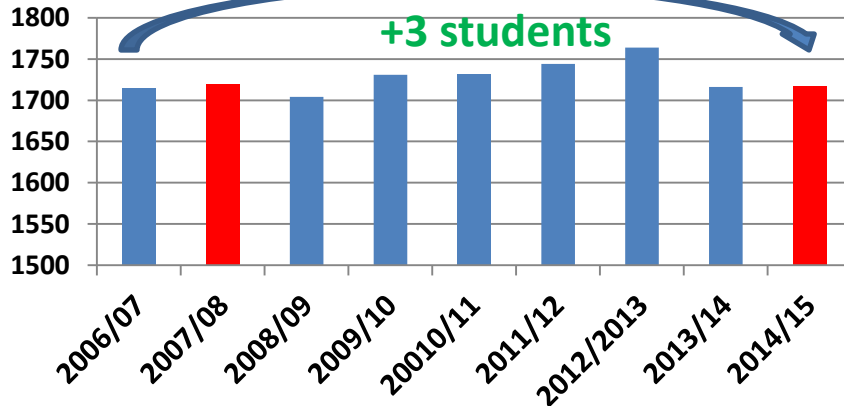
➤ Newtown High School's enrollment rose by 3 students in the past eight years. It is projected to increase by 1 in the coming year.

STAFFING – HIGH SCHOOL

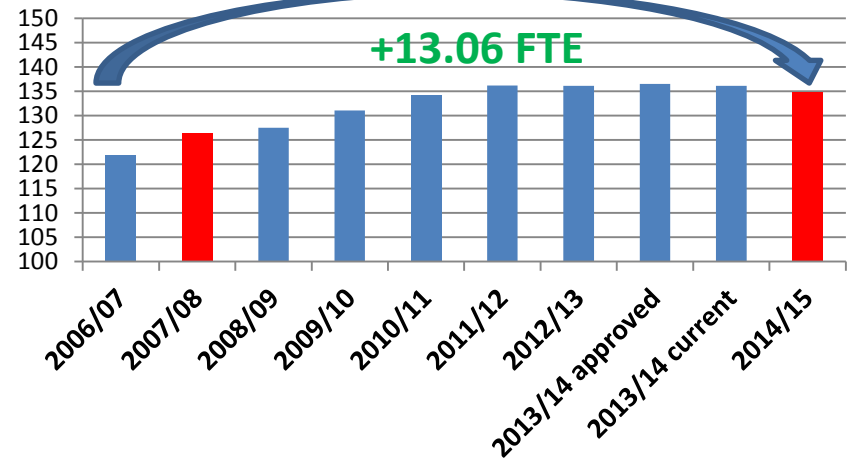
NEWTOWN HIGH SCHOOL STAFFING SUMMARY

SUPERINTENDENTS' PROPOSED STAFFING for the NEWTOWN PUBLIC SCHOOLS													
	Classification	2006-07 Staffing	2007-08 Staffing	2008-09 Staffing	2009-10 Staffing	2010-11 Staffing	2011-12 Staffing	2012-13 Staffing	2013-14 Approved	2013-14 Current	2014-15 Estimated	Change	
111	Principals	4.00	4.00	4.00	4.00	4.00	4.00	4.00	4.00	4.00	4.00	0.00	
111	Teachers	103.85	108.40	109.44	114.17	116.30	118.24	118.17	118.57	118.17	116.97	(1.60)	
111	Specialists	2.15	2.15	2.15	2.15	2.15	2.15	2.15	2.15	2.15	2.15	0.00	
112	Clerical/Secretarial	8.28	8.28	8.28	8.00	8.00	8.00	8.00	8.00	8.00	8.00	0.00	
112	Educational Assistants	1.43	1.49	1.49	0.00	0.93	0.93	0.93	0.93	0.93	0.93	0.00	
112	School To Career Coordinator	0.86	0.86	0.86	0.86	1.00	1.00	1.00	1.00	1.00	1.00	0.00	
112	Athletic Trainer	Contracted	Contracted	Contracted	1.00	1.00	1.00	1.00	1.00	1.00	1.00	0.00	
112	Job Coach	1.28	1.28	1.28	0.86	0.86	0.86	0.86	0.86	0.86	0.86	0.00	
	Total	121.85	126.46	127.50	131.04	134.24	136.18	136.11	136.51	136.11	134.91	(1.60)	

High School Enrollment

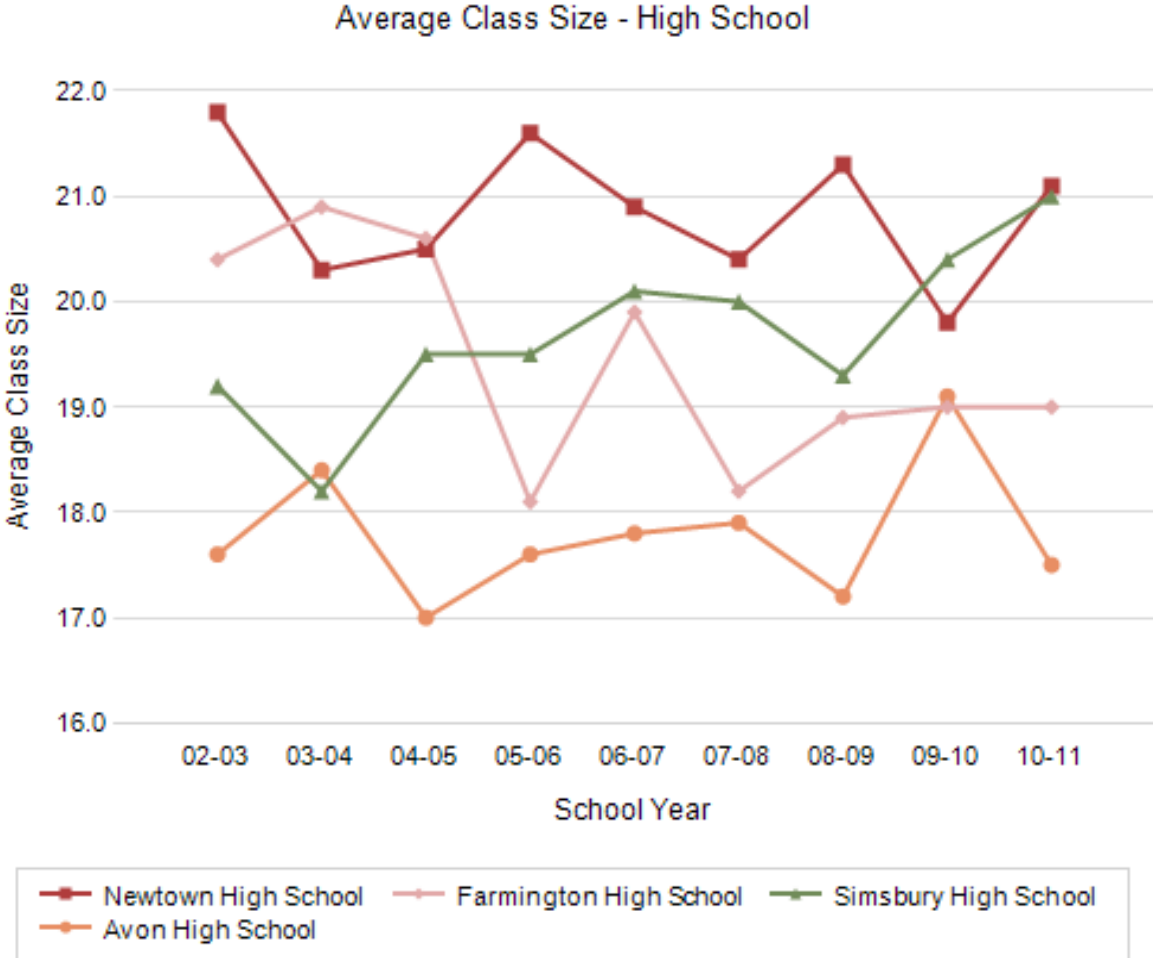


Staffing at High School

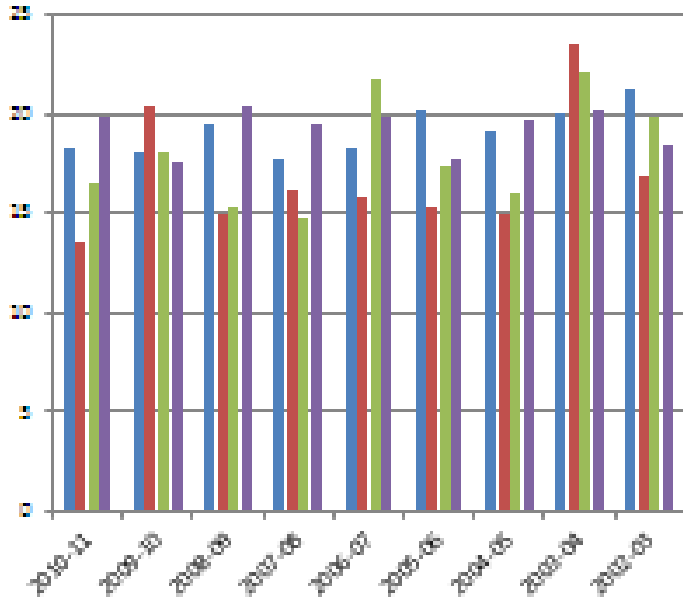


■ = graduation requirement increases for entering freshman:
 2007, +1 credit 2014, +1 credit 2015, +1 credit 2016, +1 credit

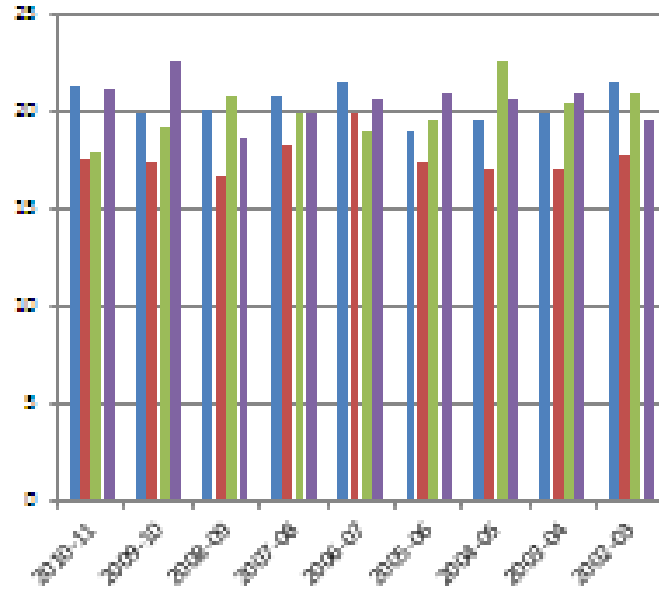
Average Class Size Comparison



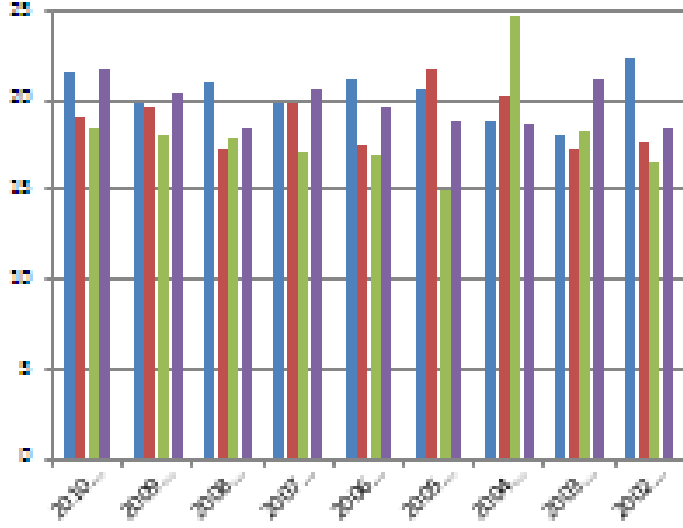
Algebra I Class Size Comparison



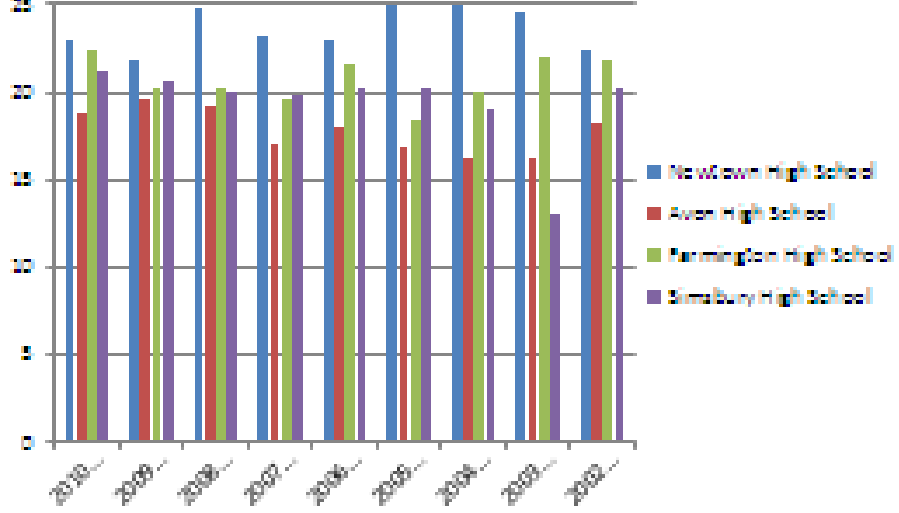
English Class Size Comparison



Biology I Class Size Comparison



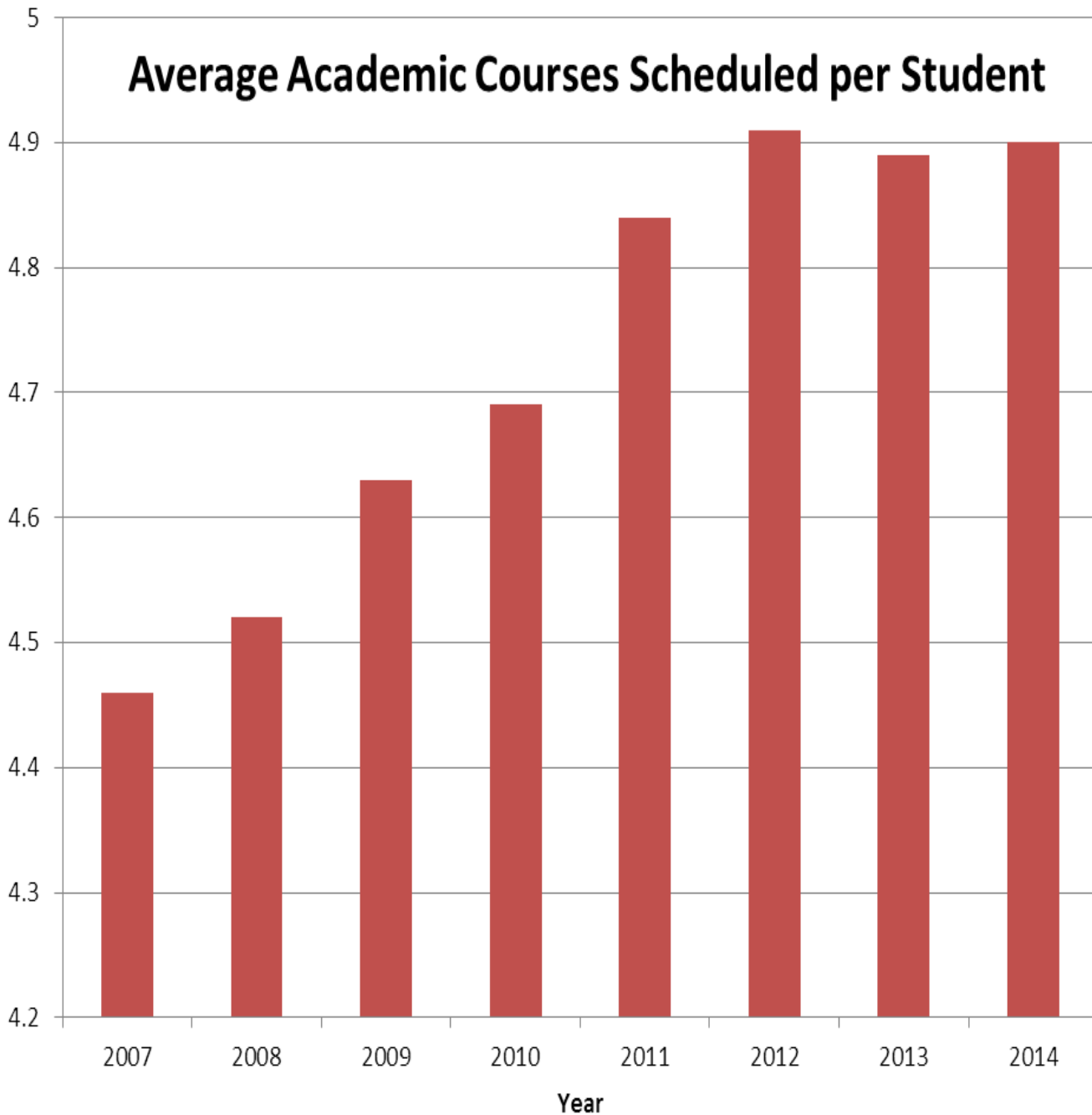
American History Class Size Comparison



- Newtown High School
- Avon High School
- Farmington High School
- Simsbury High School

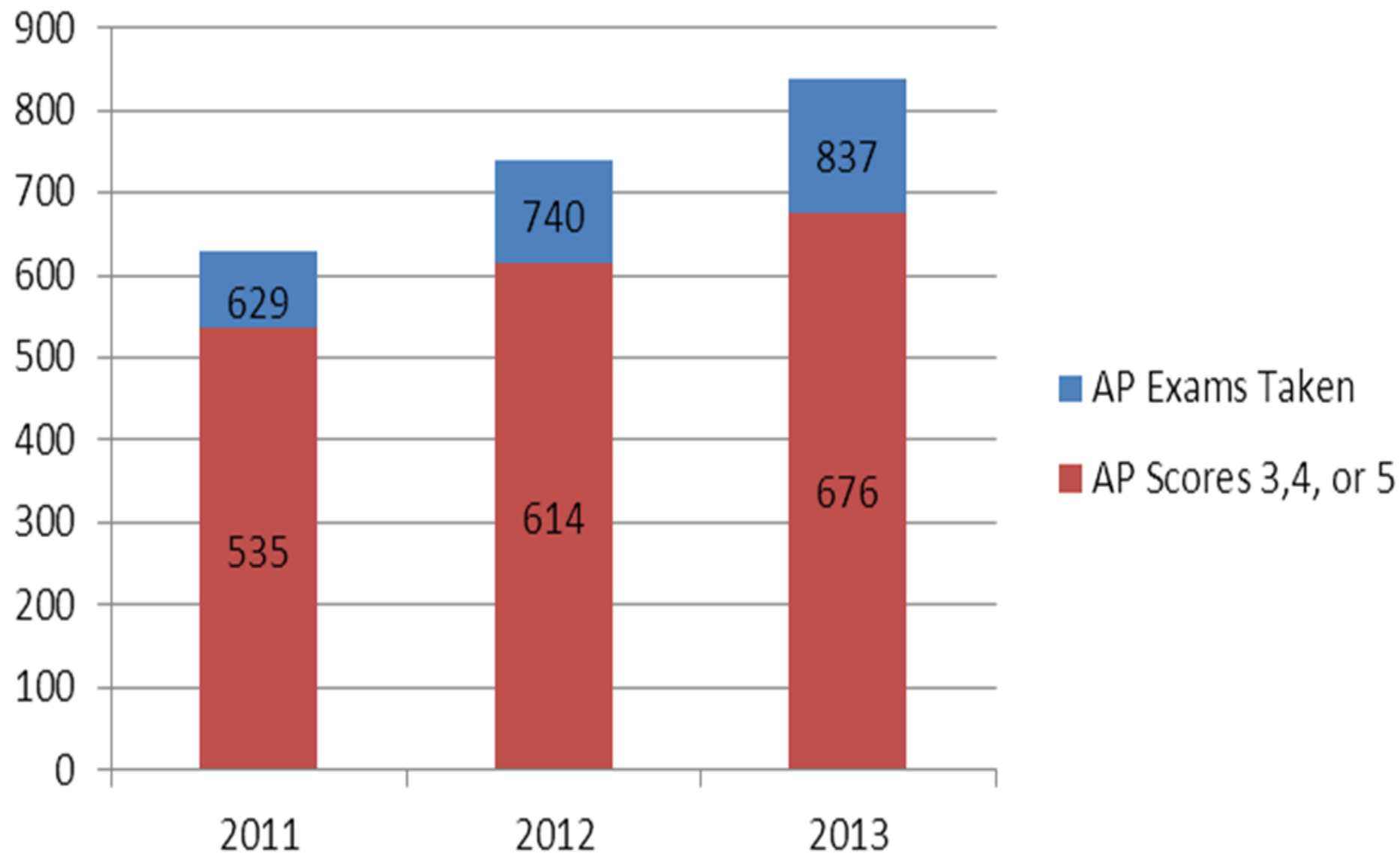
Average Academic Courses Scheduled per Student

Ave Acad Courses Sched per Student



Required Graduation Credits
2007: 21 credits
2011: 22 credits

AP Exams Taken - Scores 3 or Above



Special Education Staffing

	06-07	07-08	08-09	09-10	10-11	11-12	12-13	13-14	14-15
Staffing	140.44	150.95	150.67	147.15	150.67	152.33	154.24	154.24	157.28
+/-		+10.51	-0.28	-3.52	+3.52	+1.66	+1.91	0.00	+3.04

➤ In the past eight years 16.84 staffing positions have been added to special education. 12.04 of those positions are educational assistants who work directly with students. 1.71 jobs coach are being added this year. Other staffing has remained relatively constant.